

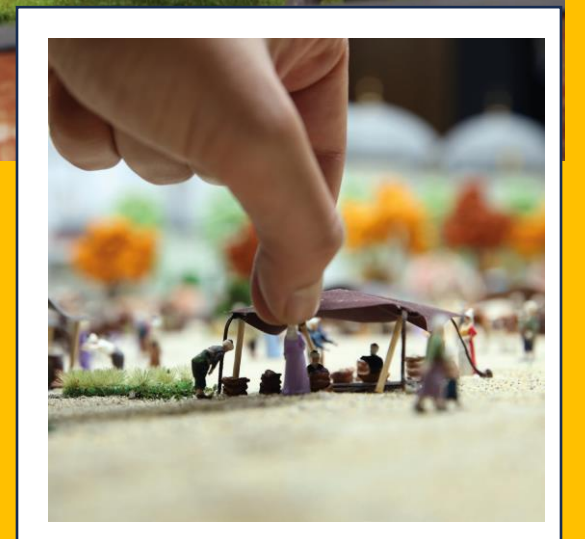
ISTANBUL HISTORICAL PENINSULA *model* EXHIBITION

“How was life in Istanbul
400 years ago?”





Topkapi Palace III. Court 17th Century



One of the World's Largest Moving Model Exhibitions

The "Istanbul Historical Peninsula Model Exhibition", which is one of the few in the world and the largest in Turkey on this scale, is exhibited in a 500m² indoor area in the Miniaturk Museum in Istanbul.

This extraordinary model exhibition, which combines culture, art and education for the first time in the world, includes 10.000 figures and 50.000 LED lights. History is carried to the present with moving figures such as thousands of people, horse-drawn carriages, fires, janissary revolts, torches and smoking chimneys.



Tiled Pavilion Kiosk



Life in Istanbul 400 Years ago with Sound, Lights and Movements

Once the center of the Roman Empire and later the Ottoman Empire, Istanbul's most historic area of 400,000m² has been revived with moving models produced in 1/87 scale. Based on historical sources, a different story can be watched in action in every 30 cm² of this extraordinary exhibition, which was completed in 5 years.

The exhibition portrays life in the area from Topkapi Palace to the Blue Mosque during a 400-year period between the 16th and 19th centuries.

The exhibition consists of 3 sections

Video Mapping: At the entrance of the exhibition, visitors are greeted with a stunning video mapping application that uses nearly 1000 artistic and cultural images from the Ottoman and Byzantine periods. The show, accompanied by fascinating music, lasts four minutes.



Main Exhibition: Visitors can get information in 11 languages by scanning the QR codes on their mobile phones and from the interactive screens around the exhibition. A day and night cycle is witnessed every 10 minutes in the exhibition which appeals to visitors of all ages.



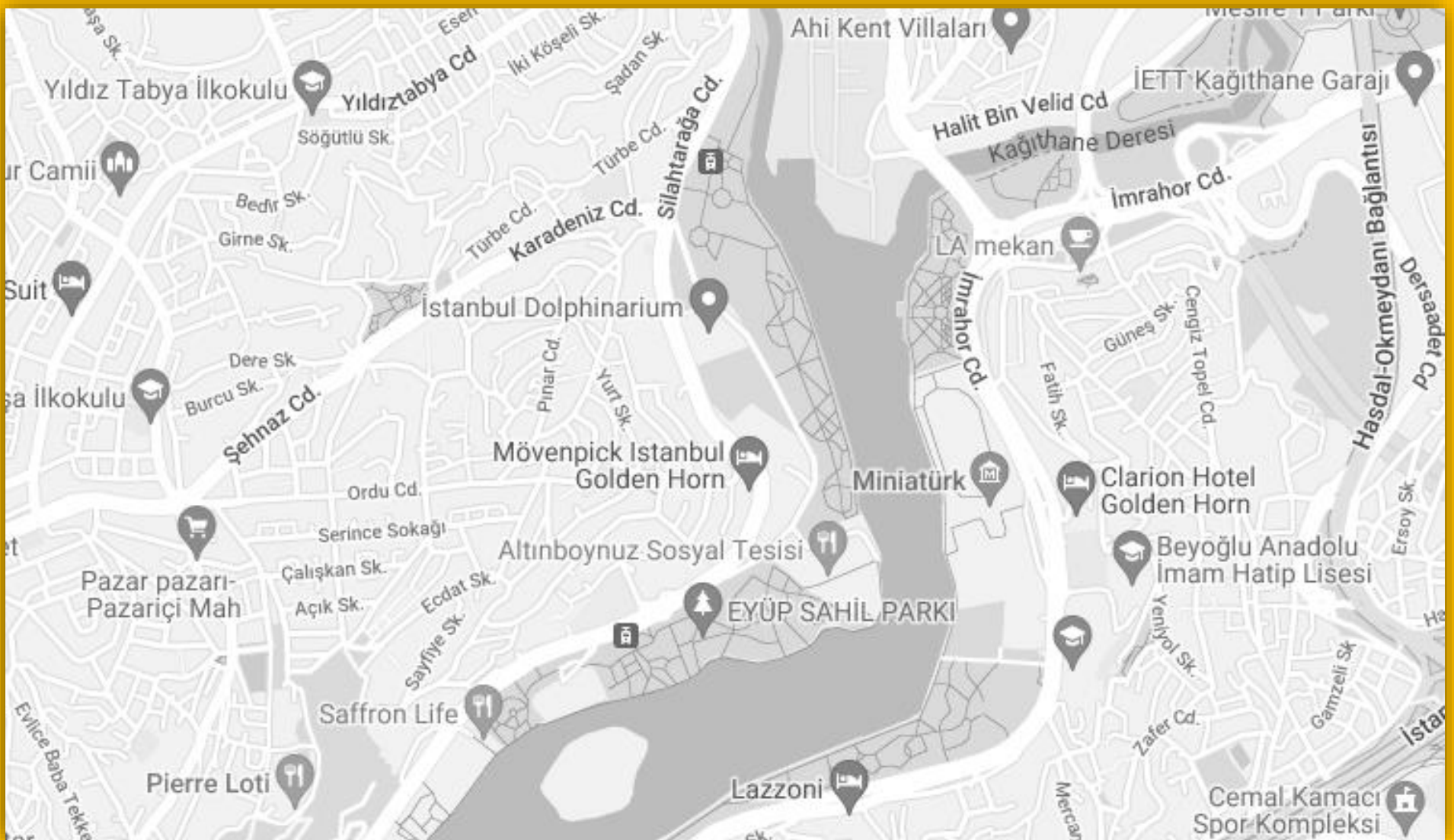
Exhibition Of How The Models Are Made: In this area, where the construction process of the models is shown, all the stages from the development of the project to the emergence of the models are explained by exhibiting the real materials of the modelers. In this section, visitors can see how models are made with 3D printers.



LOCATION

Miniatürk

Örnektepe, İmrahor Cd. No:7, 34445 Beyoğlu/İstanbul





FOLLOW US ON INSTAGRAM

@ istanbulhistoricalpeninsula

1/87

SCALED MODEL OF

400 YEARS

OF HISTORY

Powered by

modelport